

COME & BUILD WITH US



SPONSORSHIP BROCHURE

INTRODUCTION TO PROJECT

We have exciting news to share with you about an incredible addition coming soon to our beautiful Carmel Valley and surrounding Monterey Peninsula community. Imagine a playground in the heart of Carmel Valley Village that will promote active play, stimulate the imagination, and most importantly be fully accessible for all our children – regardless of their physical abilities. We are proud to announce the development of Tatum’s Treehouse: A Playground for All Children.

Our goal is to create Tatum’s Treehouse together as a community of volunteers, businesses, and corporations through donations, sponsorships, and finally the actual physical build.

We would like to take a moment to share this incredible opportunity with you in hopes that you will come alongside us to bring this vision to reality through your financial sponsorship and helping hands.

Earlier in 2019, the Tatum’s Garden Foundation sent out a request for information from interested parties to take part in a process to identify a new home for Tatum’s Treehouse,

which had originally been designed for construction in Toro Park. The Toro Park site became untenable when the Foundation’s all-volunteer-build model was found to be in conflict with a previous agreement on the land which had been gifted from the federal government several decades prior.

The Tatum’s Garden Foundation entered a memorandum of understanding (MOU) with the Carmel Valley Community Youth Center (CVCYC) to build a fully accessible playground in Carmel Valley. CVCYC was one of several nonprofits and municipalities that sent proposals to the Foundation for evaluation. The Foundation board agreed to partner with CVCYC to provide assistance and guidance throughout the process of planning, fundraising, and building the accessible playground.



As there are several rural communities in and around Monterey County's Carmel Valley, the Foundation strongly felt the current location near the pool was a good location for an accessible playground. While CVCYC will be taking the lead on this project, the Tatum's Garden Foundation board will provide their expertise on park design, community involvement, fundraising, and volunteer efforts to assist in bringing the park to fruition.

"We are thrilled to partner with the Carmel Valley Community Youth Center on this amazing project. It is our mission to cultivate accessible, inclusive play, and this project fits perfectly with it. We look forward to bringing accessible play to families throughout Monterey County," says Amanda Bakker, Executive Director of Tatum's Garden Foundation.

"The partnership with the Tatum's Garden Foundation will give us insight and expertise that will be vital to the construction of this new park," states the CVCYC Board of Directors. "Their reputation within the community as a nonprofit that gets the job done is unmatched. We are proud to announce this new partnership."

The Carmel Valley Community Youth Center is a nonprofit organization located in Carmel Valley Village. The properties managed by CVCYC include a pool, parking lot, community center hall, and a playground. The CVCYC has supported its local community and youth since its founding in 1952 and is managed by an all-volunteer board of directors. The center provides many recreational and community-based programs to Carmel Valley such as after school programs, summer camps, swimming lessons, and a celebration venue, as well as providing the community with much

needed space during times of need such as fires or other emergencies.

While the community center has made many improvements over the years, the CVCYC board has long been investigating options for the replacement of their aged playground. When the CVCYC board learned that Tatum's Garden Foundation was seeking applicants for the consultation and support for the construction of a new fully-accessible playground, the board jumped at the opportunity. The Carmel Valley Community, as well as Big Sur and the greater Monterey Peninsula, does not have any all-inclusive playgrounds for individuals with special needs. Given the already existing resources and the proximity to the Tularcitos Elementary School, the board feels a partnership with the Tatum's Garden Foundation is a perfect fit. This newly formed partnership will ensure that all children in the area will have a safe, inclusive, and modern playground for generations to come.

The Tatum's Garden Foundation has chosen once again to work with Leathers and Associates, a playground design firm based in the East Coast. They specialize in all-inclusive, custom-designed, community-built playgrounds – and in the last 40 years, have built over 3,000 playgrounds all over the U.S. and in seven foreign countries. They have created a truly one-of-a-kind playground design for us, as they did for the Tatum's Garden on Maryal Drive in Salinas, CA 93906. Tatum's Garden, designed to reflect the rich agricultural heritage of the Salinas Valley, is open to the public from 9am to Sunset, 365 days a year. Now is the time for Tatum's Treehouse in Carmel Valley!



Together, our goal is to build a unique, 8500 square foot, all-inclusive, treehouse-themed playground in the heart of Carmel Valley Village. Plans call for a playground that will be constructed entirely of green materials – 95% post-consumer recycled plastic. The playground will be built by hundreds of volunteers from the community. Building the playground with free volunteer labor will save over 25% of the cost compared to a manufactured, installed playground. This means every dollar will fund much more fun for the children of our community and all those who visit the playground! The total budget for the playground, restoration of increased accessible parking, restroom facilities, picnic areas, and landscaping is approximately \$800,000...and we need the assistance of small businesses, major corporations, and personal sponsors to complete our funding needs to make this dream a reality.

Community-built projects inspire everyone who participates with a sense of ownership, so much so that they become a focus of community life. People describe them as the experience of a lifetime. Families who help build will return for picnics and bring out-of-town guests to show them what the community accomplished together. We envision Tatum's Treehouse being a regional attraction – especially because there is nothing like it for miles around. We realize we will attract families with children of all abilities, who will in turn contribute to our local economy.

We are looking for sponsorship, not a handout! When we offer you the opportunity to be a sponsor of our project, we are offering more than a place to hang your corporate logo. We will work with you to fully maximize all the community goodwill such a project can generate. Every

press release, every interview, and every event is another opportunity for us to show our sincere gratitude to those who are willing to help us make this dream come true. Unlike newsprint ads or special events that last a day, your tax-deductible contribution will be immortalized on our donor wall – giving your family or business a lifetime of recognition for your generosity. We've prepared a complete sponsorship package that includes a list of suggested donation amounts and various ways in which we can provide recognition; however, you are encouraged to tailor donation amounts and recognition levels to your own needs. Be creative: tell us how we can best fulfill your needs and earn your sponsorship! Please join us and give root to Tatum's Treehouse for the children of Carmel Valley and surrounding Monterey Peninsula.

With Hope,

The Tatum's Treehouse Committee



TATUM'S GARDEN



SALINAS, CA



OUR HISTORY

In 2013, our community came together in an unprecedented way to fund and build Tatum's Garden. With the help of over 3,000 volunteers and hundreds of generous donors, our vision became a reality. It stands today as Monterey County's only fully accessible and inclusive playground...a sanctuary where children of all abilities can play together, side-by-side.



Tatum and her Daddy ready to get started at the ground breaking.



Volunteers hard at work constructing Tatum's Garden.



2013

THE BAKKER FAMILY & TATUM'S LEGACY



2021

Tatum Bakker, the inspiration for the project, is a Salinas native who was born with spina bifida in 2010. Her parents, Shawn and Amanda, are the visionaries behind this effort. They are pictured here with her older siblings, Olivia and Wyatt.



WHERE WE ARE TODAY

Shortly after Tatum's Garden opened to the public, The Tatum's Garden Foundation was established as a 501c3 nonprofit, which raises funds annually to privately care for and maintain Tatum's Garden in Salinas. However, as we saw the massive community response to Tatum's Garden, our vision soon expanded. Our Vision Statement reads: "The Tatum's Garden Foundation: Inspiring communities to foster abundant play for children of every ability." We have been pursuing another opportunity to expand inclusive play in Monterey County since April 2019 and are thrilled to share our vision to bring "Tatum's Treehouse" – a new fully inclusive and accessible Treehouse playground – with our partners Carmel Valley Community Youth Center (CVCYC) in Carmel Valley, CA.

Amanda Bakker
Executive Director, Tatum's Garden Foundation

The Carmel Valley Community Youth Center (CVCYC) has been trying to improve and remodel our playground for many years. We have realized it neither serves the needs of all children in our community nor does it inspire imaginative play.

Three years ago, while maintaining the playground, I watched a father futilely trying to help his 25 year old daughter with a disability get into a swing. I felt empathy for the father and thought about what we could do to remove the barriers that our playground was creating.

Another dad was standing beside me also watching. I said to him, "I wish we could build a

playground like Tatum's Garden for everybody of all abilities." He surprised me by saying that Tatum's aunt works for him. He said to email him and he would forward it to the aunt. Shortly after sending the email, we were contacted by Amanda Bakker saying, "I would be happy to connect with you and see how our organizations may be able to partner together." And so began the great partnership of Tatum's Foundation and the CVCYC Board to build an accessible playground for our community and the Monterey Peninsula. Please join us, donate, volunteer, and help us build Tatum's Treehouse!

Ed Lake
CVCYC Board Member, VP of Facilities

When I first heard that CVCYC was wanting to bring an inclusive playground to our Valley, I was extremely excited. Carmel Valley and Tularcitos have always been nurturing and welcoming communities. We have always had students with different abilities at Tularcitos and the compassion, understanding, and level of respect that exposure has developed in all of our students is invaluable. To have a playground that better meets all of our students' needs and brings our community into contact with people from different life circumstances will be a big benefit to our students and have a positive impact on our community.

Ryan Peterson
Principal Tularcitos Elementary



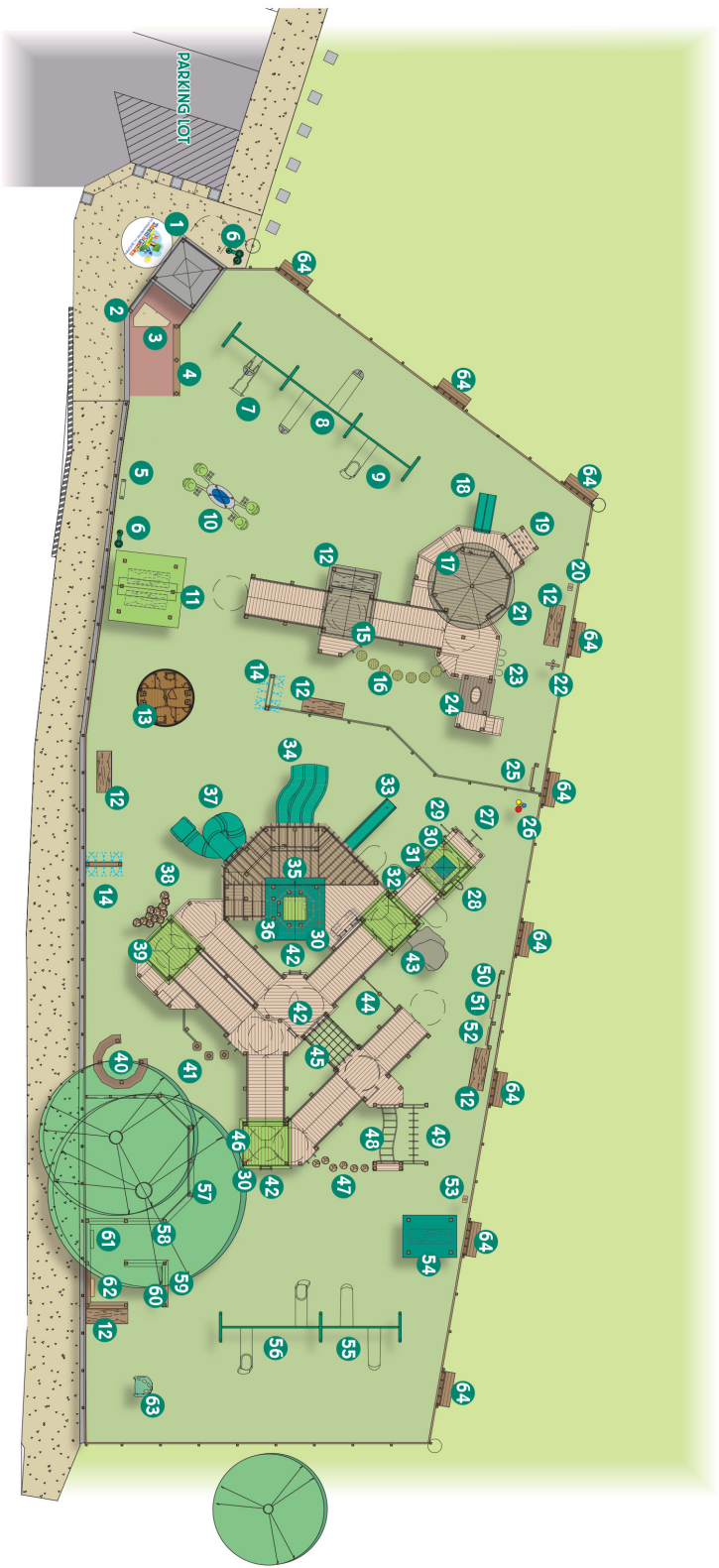
DESIGN CONCEPT FOR TATUM'S TREEHOUSE



Playgrounds by
LEATHERS
Dream. Build. Play!

Tatum's Treehouse
A PLAYGROUND FOR ALL CHILDREN
CARROLL VALLEY, CA, AUGUST 2020
ARTIST'S CONCEPT RENDERING

DESIGN CONCEPT FOR TATUM'S TREEHOUSE



- 1 ROOTED ENTRY W/DONOR BOARDS
- 2 MOSAIC WALL
- 3 PAVER COURT
- 4 ENTRY BENCH
- 5 TUBE CHIMES
- 6 WATER FOUNTAINS/BOTTLE FILERS
- 7 EXPRESSION SWING
- 8 TOT SWINGS
- 9 THERAPEUTIC SWING
- 10 WE-SAW SEE-SAW
- 11 COVERED SEATING W/LOG BENCHES
- 12 LOG BENCH
- 13 ACCESSIBLE MERRY-GO-ROUND
- 14 LOW-FLOW MISTER STATIONS

- 17 WOODLAND GNOME HOME
- 18 MOSSY SLIDE
- 19 TREE ROOT CLIMBER
- 20 BELL TREE
- 21 NUMBER MAZE
- 22 RAIN WHEEL
- 23 ANIMAL FACE WALL W/SOUNDS
- 24 LOG TUNNEL
- 25 CLOCK PANEL
- 26 BONGO TREE
- 27 SNAKE CLIMBER
- 28 TREEHOUSE ROPE LADDER
- 29 FIRE POLE
- 30 PHONES

- 33 STRAIGHT SLIDE
- 34 TRIPLE ZIGZAG SLIDES
- 35 MAIN TREEHOUSE W/BIRD SOUNDS
- 36 HOLLOW TRUNK CLIMB
- 37 GIANT TWISTY SLIDE
- 38 STUMP CLIMBER
- 39 SOUTH WING OF TREEHOUSE
- 40 BIRDS' NEST QUIET AREA
- 41 POST STEPPERS
- 42 LADDERS
- 43 SANDSTONE ROCK CLIMBER
- 44 HIGH & LOW GYM BARS
- 45 CARGO NET CLIMBER
- 46 SOUTH WING OF TREEHOUSE

- 49 ACCESSIBLE RING LADDER
- 50 DOG MAZE PANEL
- 51 CASCADE BALL PANEL
- 52 BALL MAZE PANEL
- 53 BELL TREE
- 54 COVERED SEATING W/LOG BENCH
- 55 STRAP SWINGS
- 56 THERAPEUTIC SWINGS
- 57 BENCHES
- 58 SENSORY MAZE
- 59 NUMBER MAZE
- 60 MIRRORS
- 61 CHIMES PANEL
- 62 DRUM PANEL

NAMING RIGHT OPPORTUNITIES

**all naming rights are subject to approval by the Foundation*

Park Partner \$250,000

Imagine seeing your name associated with one of the most special playgrounds in California! Your name will be given exposure to hundreds of people every day, from across the Monterey Peninsula, as families from all over the region use this one-of-a-kind park as a destination spot.

Naming

Tatum's Treehouse naming rights means the park will be called "Tatum's Treehouse: A Playground for All Children, brought to you by (ABC Company or Family)."



Benefits and Recognition

- Company/Individual Name/Logo permanently displayed on Main Entrance Sign
- Company/Individual Name/Logo placed on pre-construction sign at location
- Official Spokesperson to speak at Grand Opening of Tatum's Treehouse
- Official Spokesperson to kick off Build Week
- Link to your website on the front page of tatumstreehouse.com and preferred placement on donor page
- Recognition on Facebook page with logo displayed
- Photo opportunity provided with check presentation at location of your choice
- Full-page ad in Grand Opening Program
- Plaque/Award presented at Grand Opening
- Primary location of Company/Individual name displayed on donor wall at Tatum's Treehouse
- Logo included on all printed materials
- Invitation to attend all newsworthy events
- Invitation to Ground-Breaking Ceremony with preferred recognition
- Company banner displayed at all Tatum's Treehouse events
- Company name and logo on Build Week T-shirts
- Company table set up promoting product/service during Build Week
- Corporate information included in media/press packet
- Other appropriate opportunities for recognition are negotiable
- Become a part of local history and a recognized community partner!



NAMING RIGHT OPPORTUNITIES

**all naming rights are subject to approval by the Foundation*

“Main Treehouse” Sponsor \$150,000

Tatum’s Treehouse has designed a very special superstructure as the focal point of our playground with awesome, sensory-rich features, including bird sounds...in a multi-story, fully-accessible Main Treehouse!

Naming

Your company or family will have the opportunity to name* the focal point of our playground. As families approach Tatum’s Treehouse, it will be the first thing they see! It will be wonderful exposure for your company or family, as hundreds of people a week visit!



Benefits and Recognition

- Company/Individual name permanently displayed on the Main Treehouse at Tatum’s Treehouse
- Company/Individual Name on pre-construction sign at location
- Official Spokesperson to kick off Build Week
- Link to your website on the front page of tatumstreehouse.com and preferred placement on donor page
- Recognition on Facebook page with logo displayed
- Photo opportunity provided with check presentation at location of your choice
- Half-page ad in Grand Opening Program
- Plaque/Award presented at Grand Opening
- Primary location of Company/Individual name displayed on donor wall at Tatum’s Treehouse
- Logo included on all printed materials
- Invitation to attend all newsworthy events
- Invitation to Ground Breaking Ceremony with preferred recognition
- Company banner displayed at all Tatum’s Treehouse events
- Company logo on Tatum’s Treehouse Build Week T-shirts
- Company table set up promoting product/service during Build Week
- Corporate information included in media/press packet
- Become a part of local history and a recognized community partner!



NAMING RIGHT OPPORTUNITIES

**all naming rights are subject to approval by the Foundation*

"Tot-Lot" Sponsor \$100,000

Tatum's Treehouse has designed a super-fun play area for our littlest visitors! The Tot Lot is specially designed for ages 0-5, with lots of room to crawl, toddle, wheel, or play in a sensory-rich area just for them, with a fun nature-inspired theme to the components and play panels. Families of toddlers and preschoolers will have added peace of mind knowing their little ones are able to play and use their imaginations in a space just their size, divided by a picket fence, without the fear of big kids running them over.



Naming

Your company or family will have the opportunity to name* our very special Tot Lot Area. Families will come here just so their little ones can play in this zone! It will get lots of traffic and provide you lots of wonderful exposure.

Benefits and Recognition

- Company/Individual name permanently displayed over the Tot Lot
- Company/Individual Name on pre-construction sign at location
- Official Spokesperson to kick off Build Week
- Link to your website on the front page of tatumstreehouse.com and preferred placement on donor page
- Recognition on Facebook page with logo displayed
- Photo opportunity provided with check presentation at location of your choice
- Half-page ad in Grand Opening Program
- Plaque/Award presented at Grand Opening
- Primary location of Company/Individual name displayed on donor wall at Tatum's Treehouse
- Logo included on all printed materials
- Invitation to attend all newsworthy events
- Invitation to Ground Breaking Ceremony with preferred recognition
- Company banner displayed at all Tatum's Treehouse events
- Company logo on Tatum's Treehouse Build Week T-shirts
- Company table set up promoting product/service during Build Week
- Corporate information included in media/press packet
- Become a part of local history and a recognized community partner!



NAMING RIGHT OPPORTUNITIES

**all naming rights are subject to approval by the Foundation*

"Seniors' Corner" Sponsor \$35,000

(Seating area around the Oak Tree)

A very special feature of Tatum's Treehouse is that it is accessible and inclusive to all – and age will not be a boundary either. We especially welcome our Senior Community to come out and enjoy the beauty and creativity of Tatum's Treehouse. Our Seniors' Corner will be a lovely, accessible area with comfy benches and beautiful landscaping, offering a unique opportunity to enjoy the sights and sounds of children at play.

Naming

Your company or family will have exclusive naming rights* for the Seniors' Corner.



Benefits and Recognition

- Company/Individual name permanently displayed at the Seniors' Corner
- Preferred placement of your logo on donor page of tatumstreehouse.com
- Recognition on Facebook page with logo displayed
- Photo opportunity provided with check presentation at location of your choice
- Company/Individual name listed in Grand Opening Program
- Plaque/Award presented at Grand Opening
- Primary location of Company/Individual name displayed on donor wall at Tatum's Treehouse
- Logo included on all printed materials
- Company banner displayed at Tatum's Treehouse during Build Week
- Company logo on Tatum's Treehouse Build Week T-shirts
- Corporate information included in media/press packet
- Become a part of local history and a recognized community partner!



NAMING RIGHT OPPORTUNITIES

**all naming rights are subject to approval by the Foundation*

Accessible Merry-Go-Round Sponsor \$25,000

Naming

Your company or family will have an exclusive naming right* for the Accessible Merry-Go-Round.

Benefits and Recognition

- Company/Individual name permanently displayed on the Accessible Merry-Go-Round
- Preferred placement of your logo on donor page of tatumstreehouse.com
- Recognition on Facebook page with logo displayed
- Photo opportunity provided with check presentation at location of your choice
- Company/Individual name listed in Grand Opening Program
- Plaque/Award presented at Grand Opening
- Primary location of Company/Individual name displayed on donor wall at Tatum's Treehouse
- Logo included on all printed materials
- Company logo on Tatum's Treehouse Build Week T-shirts
- Company banner displayed at Tatum's Treehouse during Build Week
- Corporate information included in media/press packet
- Become a part of local history and a recognized community partner!



Photo of component placement in TTH



Factory photo of Accessible Merry-Go-Round Component



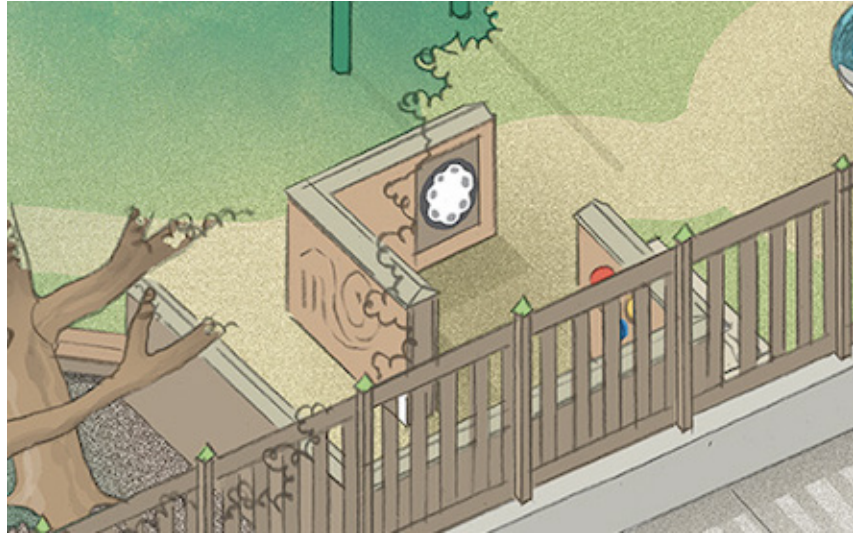
NAMING RIGHT OPPORTUNITIES

**all naming rights are subject to approval by the Foundation*

“Sensory Maze” Sponsor \$10,000

One of the most interactive features of Tatum’s Treehouse will be the beautiful Sensory Maze. The maze will feature tile mosaic, murals, and amazing tactile features to colorfully and creatively represent the natural ecosystem of the park, while engaging children’s senses.

The Big Kids Area in Tatum’s Treehouse will be home to a creative, colorful, and custom-designed Sensory Maze. These panels will be filled with color, texture, pattern and movement to stimulate the senses and inspire young minds!



Naming

Your company or family will have an exclusive naming right* for the Sensory Maze.

Benefits and Recognition

- Company/Individual name permanently displayed at the entrance to the Sensory Maze
- Preferred placement of your logo on donor page of tatumstreehouse.com
- Recognition on Facebook page with logo displayed
- Photo opportunity provided with check presentation at location of your choice
- Company/Individual name listed in Grand Opening Program
- Plaque/Award presented at Grand Opening
- Primary location of Company/Individual name displayed on donor wall at Tatum’s Treehouse
- Logo included on all printed materials
- Company banner displayed at Tatum’s Treehouse during Build Week
- Company logo on Tatum’s Treehouse Build Week T-shirts
- Corporate information included in media/press packet
- Become a part of local history and a recognized community partner!



NAMING RIGHT OPPORTUNITIES

**all naming rights are subject to approval by the Foundation*

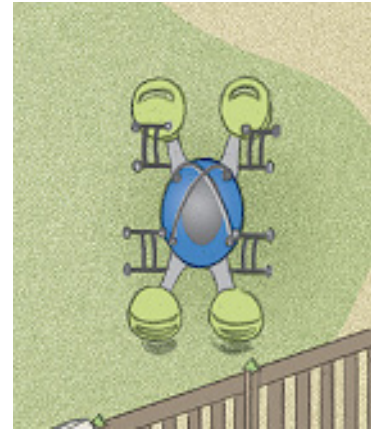
We-Saw Sponsor \$10,000

Naming

Your company or family will have an exclusive naming right* for the We-Saw.

Benefits and Recognition

- Company/Individual name permanently displayed on the We-Saw
- Preferred placement of your logo on donor page of tatumstreehouse.com
- Recognition on Facebook page with logo displayed
- Photo opportunity provided with check presentation at location of your choice
- Company/Individual name listed in Grand Opening Program
- Plaque/Award presented at Grand Opening
- Primary location of Company/Individual name displayed on donor wall at Tatum's Treehouse
- Logo included on all printed materials
- Company logo on Tatum's Treehouse Build Week T-shirts
- Company banner displayed at Tatum's Treehouse during Build Week
- Corporate information included in media/press packet
- Become a part of local history and a recognized community partner!



NAMING RIGHT OPPORTUNITIES

**all naming rights are subject to approval by the Foundation*

Bottle Filler/Drinking Fountain (with Dog Bowl) Sponsor \$8,500

Help us be as Eco-Friendly as possible at Tatum's Treehouse by adding a bottle filling station for reusable water bottles, and drinking fountains for our visitors and pets

Naming

Your company or family will have an exclusive naming right* for the Bottle Filler with Dog Bowl.

Benefits and Recognition

- Company/Individual name permanently displayed on the Bottle Filler with Dog Bowl
- Preferred placement of your logo on donor page of tatumstreehouse.com
- Recognition on Facebook page with logo displayed
- Photo opportunity provided with check presentation at location of your choice
- Company/Individual name listed in Grand Opening Program
- Plaque/Award presented at Grand Opening
- Primary location of Company/Individual name displayed on donor wall at Tatum's Treehouse
- Logo included on all printed materials
- Company logo on Tatum's Treehouse Build Week T-shirts
- Company banner displayed at Tatum's Treehouse during Build Week
- Corporate information included in media/press packet
- Become a part of local history and a recognized community partner!



Bottle Filler/Drinking Fountain Sponsor \$7,000

Help us be as Eco-Friendly as possible at Tatum's Treehouse by adding a bottle filling station for reusable water bottles, and drinking fountains for our visitors

Naming

Your company or family will have an exclusive naming right* for the Bottle Filler/Drinking Fountain.

Benefits and Recognition

- Company/Individual name permanently displayed on the Bottle Filler/Drinking Fountain
- Preferred placement of your logo on donor page of tatumstreehouse.com
- Recognition on Facebook page with logo displayed
- Photo opportunity provided with check presentation at location of your choice
- Company/Individual name listed in Grand Opening Program
- Plaque/Award presented at Grand Opening
- Primary location of Company/Individual name displayed on donor wall at Tatum's Treehouse
- Logo included on all printed materials
- Company logo on Tatum's Treehouse Build Week T-shirts
- Company banner displayed at Tatum's Treehouse during Build Week
- Corporate information included in media/press packet
- Become a part of local history and a recognized community partner!



NAMING RIGHT OPPORTUNITIES

**all naming rights are subject to approval by the Foundation*

Giant Twisty Slide Sponsor \$7,000

Naming

Your company or family will have an exclusive naming right* for the Giant Twisty Slide Sponsor.

Benefits and Recognition

- Company/Individual name permanently displayed on the Giant Twisty Slide
- Preferred placement of your logo on donor page of tatumstreehouse.com
- Recognition on Facebook page with logo displayed
- Photo opportunity provided with check presentation at location of your choice
- Company/Individual name listed in Grand Opening Program
- Plaque/Award presented at Grand Opening
- Primary location of Company/Individual name displayed on donor wall at Tatum's Treehouse
- Logo included on all printed materials
- Company logo on Tatum's Treehouse Build Week T-shirts
- Company banner displayed at Tatum's Treehouse during Build Week
- Corporate information included in media/press packet
- Become a part of local history and a recognized community partner!



Sandstone Rock Climber Sponsor \$11,000

Naming

Your company or family will have an exclusive naming right* for the Sandstone Rock Climber.

Benefits and Recognition

- Company/Individual name permanently displayed on the Sandstone Rock Climber
- Preferred placement of your logo on donor page of tatumstreehouse.com
- Recognition on Facebook page with logo displayed
- Photo opportunity provided with check presentation at location of your choice
- Company/Individual name listed in Grand Opening Program
- Plaque/Award presented at Grand Opening
- Primary location of Company/Individual name displayed on donor wall at Tatum's Treehouse
- Logo included on all printed materials
- Company logo on Tatum's Treehouse Build Week T-shirts
- Company banner displayed at Tatum's Treehouse during Build Week
- Corporate information included in media/press packet
- Become a part of local history and a recognized community partner!



NAMING RIGHT OPPORTUNITIES

**all naming rights are subject to approval by the Foundation*

"Stump Climber" Sponsor \$5,500

Naming

Your company or family will have an exclusive naming right* for the Stump Climber.

Benefits and Recognition

- Company/Individual name permanently displayed on the Stump Climber
- Preferred placement of your logo on donor page of tatumstreehouse.com
- Recognition on Facebook page with logo displayed
- Photo opportunity provided with check presentation at location of your choice
- Company/Individual name listed in Grand Opening Program
- Plaque/Award presented at Grand Opening
- Primary location of Company/Individual name displayed on donor wall at Tatum's Treehouse
- Logo included on all printed materials
- Company logo on Tatum's Treehouse Build Week T-shirts
- Company banner displayed at Tatum's Treehouse during Build Week
- Corporate information included in media/press packet
- Become a part of local history and a recognized community partner!



Factory photo of stump climber



GENERAL FUND SPONSORSHIP OPPORTUNITIES

Platinum Sponsor \$10,000

- Platinum level recognition on donor wall at Tatum's Treehouse
- Platinum level recognition with logo on donor page of tatumstreehouse.com
- Recognition on Facebook page with logo displayed
- Photo opportunity provided with check presentation at location of your choice
- Company/Individual name listed in Grand Opening Program
- Plaque/Award presented at Grand Opening
- Corporate information included in media/press packet

Gold Sponsor \$5,000

- Gold level recognition on donor wall at Tatum's Treehouse
- Gold level recognition with logo on donor page of tatumstreehouse.com
- Recognition on Facebook page
- Company/Individual name listed in Grand Opening Program
- Plaque/Award presented at Grand Opening

Silver Sponsor \$2,500

- Silver level recognition on donor wall at Tatum's Treehouse
- Silver level recognition on donor page of tatumstreehouse.com
- Recognition on Facebook page
- Company/Individual name listed in Grand Opening Program

Bronze Sponsor \$1,000

- Bronze level recognition on donor wall at Tatum's Treehouse
- Bronze level recognition on donor page of tatumstreehouse.com
- Company/Individual name listed in Grand Opening Program

Copper Sponsor \$500

- Copper level recognition on donor wall at Tatum's Treehouse
- Copper level recognition on donor page of tatumstreehouse.com

In-Kind Donations

A major part of our fundraising efforts to make Tatum's Treehouse a reality will be to secure in-kind donations. These could include things like construction materials and supplies, food or drink for events or Build Week, office supplies, or other supplies or services. Please contact us through tatumstreehouse.com if this is a way your company, church, or family can get involved!



COMPONENTS SPONSORSHIP

Unlike basic playground equipment which can be extremely limiting for children with special needs, the components that will be in Tatum's Treehouse are purposefully designed to accommodate ALL children. Imagine children being able to play, side-by-side, regardless of physical differences!

This park is a grassroots effort, and in order to obtain these components to build Tatum's Treehouse, we need your help. We are offering a unique way for you to not only support the playground but be forever tied to this project. By sponsoring a component, you will memorialize your family or business name on our donor wall at the entrance to Tatum's Treehouse.

Below is a current list of all the components in our preliminary designs - including location within the build, number of components needed, and sponsorship price per item - that are available for sponsorship...

Note that components in bold with an asterisk () present a naming opportunity.

**Be aware that as components are sponsored, they will be removed from this list. Please find a current, active list at www.tatumstreehouse.com.

Components may be sponsored online at tatumstreehouse.com, or by mailing a check to Tatum's Garden Foundation 40 Clark St, Ste H Salinas CA 93901

TOT LOT	Price	Number of Items
Expression Swing	\$3,000.00	1
Tot Swings	\$2,200.00	2
Therapeutic Swing	\$2,500.00	1
Log Bench	\$4,000.00	3
Shaded Seating Area	\$7,000.00	1
Covered Seating	\$5,000.00	1
Mossy Slide	\$2,000.00	1
Tree-Root Climber	\$1,600.00	1
Music Panel	\$1,500.00	1
Number Panel	\$500.00	1
Rain Wheel	\$1,000.00	1
Bell Tree	\$1,300.00	2
Clock Panel	\$500.00	1
Tube Chimes	\$1,500.00	1
Water Mistlers	\$1,800.00	2
Animal-Face Wall with Sounds	\$2,000.00	1

COMPONENTS SPONSORSHIP

TOT LOT	Price	Number of Items
Mushroom Steppers	\$3,600.00	1
Log Tunnel	\$1,200.00	1
Accessible Merry-Go-Round	\$25,000.00	1
We-Saw	\$10,000.00	1
Accessible Ramp	\$1,000.00	3
Bottle Filler/Drinking Fountain	\$7,000.00	1
PERIMETER		
Bench	\$1,000.00	9
Donor Boards	\$3,000.00	1
Bottle Filler/Drinking Fountain (with Dog Bowl)	\$8,5000.00	1
Entry Cone	\$2,000.00	1
5-12 YEAR OLD AREA		
Stump Climber	\$5,500.00	1
Triple Zigzag Slides	\$3,500.00	1
Straight Slide	\$800.00	1
Giant Twisty Slide	\$7,000.00	1
Sandstone Rock Climber	\$11,000.00	1
Covered Seating	\$5,000.00	1
Water Misters	\$3,500.00	1
Cargo Net Ladder	\$1,200.00	1
Post Steppers	\$350.00	1
Stepping Stumps	\$3,000.00	1
Benches (planter)	\$1,500.00	1
Ladder	\$500.00	2
Cozy Cocoon	\$3,500.00	1
Phone	\$500.00	3
Treehouse Rope Ladder	\$1,000.00	1
Wave Horizontal Ladder	\$1,800.00	1

COMPONENTS SPONSORSHIP

5-12 YEAR OLD AREA	Price	Number of Items
Accessible Ring Ladder	\$1,800.00	1
Hollow Trunk Climb	\$1,500.00	1
Snake Climber	\$1,100.00	1
Gym Bar	\$600.00	1
Log Benches	\$4,000.00	3
Main Treehouse	\$150,000.00	1
Bird's Nest Quiet Space	\$4,000.00	1
Fire Pole	\$1,000.00	1
Balance Beam	\$350.00	2
Doghouse Maze Panel	\$550.00	1
Cascade Turn Panel	\$800.00	1
Ball Maze Panel	\$800.00	1
Bongo Tree	\$1,300.00	1
Sensory Maze	\$3,000.00	1
Swinging Bridge	\$2,500.00	1
Strap Swings	\$2,200.00	2
Therapeutic Swings	\$2,500.00	2
Accessible Ramps	\$1,000.00	6

Artwork for Sponsorship:

Custom Tile Mosaic Entryway - \$5,000

Tile Mosaic Walls (6) - \$2,000 each

Mural Walls (2) - \$2,500 each

Additional Items for Sponsorship:

***"Special Note on Sponsored Benches":*

There are 15 benches to be sponsored in this space, and each will showcase a permanent, personalized metal plaque.

Perimeter Benches (9) - \$1000 each

Log Benches (6) - 6 log benches (3 in Tot Lot, 3 in Big Kid Area) - \$4000 each

COMPONENTS SPONSORSHIP

Paving Brick Sponsor \$250 for 8x8 Logo Brick

\$100 for 4x8 Brick

The walkway leading up to Tatum's Treehouse will be inlaid with beautifully laser-engraved brick pavers that will last for decades. This is an exceptional way to share your dedication to Tatum's Treehouse with family names, in memory of a loved one, a quote, or your business name. Bricks are traditional red bricks with black engraving.

Benefits and Recognition

-Your company or family name, a favorite verse, or quote will be permanently displayed on the walkway entering Tatum's Treehouse!

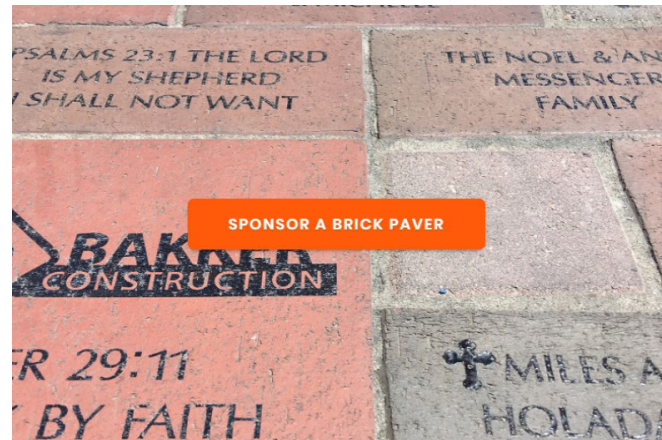
Fence Picket Sponsor \$50 each

The entire playground surface at Tatum's Treehouse will be surrounded by a 4-foot picket fence for children's safety and parent's peace of mind. You have the opportunity to sponsor a fence picket and personalize it with up to 22 characters! Pickets are made of 100% recycled plastic...in fact, each picket is made out of 42 recycled milk jugs! Pickets are cedar-colored and engraved into a green center core. What a great way to leave a lasting legacy for your family or business at this amazing playground.

Benefits and Recognition

-Your company or family name, children or grandchildren's names will be permanently displayed on the picket fence surrounding Tatum's Treehouse.

*For Personalized Fence Pickets & Engraved Bricks,
Please fill out the attached form or place your order online at tatumstreehouse.com*





Tatum's Treehouse

PERSONALIZED FENCE PICKETS & ENGRAVED BRICKS

Place your order for your very own personalized addition to the new Tatum's Treehouse Playground. Sponsoring either a Personalized Fence Picket, a 4"x8" Engraved Brick, or even an 8"x8" Engraved Logo Brick, offers you a place to leave a lasting legacy of your support for our project with names, your business or a meaningful quote of your choice... to be seen and enjoyed at the playground for generations to come!

PERSONALIZED ENGRAVED BRICK: 4" x 8" BRICK \$100

PERSONALIZED ENGRAVED BRICK: 8" x 8" LOGO BRICK \$250

Personalized Bricks are engraved with laser-blasting, for extreme durability. Bricks are traditional red bricks, with black engraving. Each 4" x 8" brick holds 3 lines of text, with up to 20 CHARACTERS PER LINE, INCLUDING SPACES. 8" x 8" Engraved Bricks can hold your company logo, and 2 lines of text beneath, each with up to 20 CHARACTERS PER LINE, INCLUDING SPACES.

4" X 8" Engraved Brick Line 1 _____
 Line 2 _____
 Line 3 _____

8" X 8" Engraved Brick Line 1 _____
 Line 2 _____

Logos must be submitted online in digital format to tatumsgarden@gmail.com

PERSONALIZED FENCE PICKET: \$50 EACH

Fence Pickets are made of 100% recycled plastic. In fact, each picket is made of about 42 recycled milk jugs! Pickets are cedar-colored and engraved into a green center core. Each picket holds 22 TOTAL CHARACTERS, INCLUDING SPACES.

Picket 1 _____
Picket 2 _____
Picket 3 _____
Picket 4 _____
Picket 5 _____

PAYMENT All contributions, monetary or in-kind are fully tax-deductable, and can be made payable to: The Tatum's Garden Foundation, 40 Clark St., Suite H, Salinas, CA 93901. The Tatum's Garden Foundation is a nonprofit 501 c3 organization. Tax ID# 46-3045040

TOTAL ENCLOSED (Personalized Fence Pickets & Engraved Bricks) \$

Name _____

Address _____

Phone _____ Email _____

Cash Check# _____ Credit Card Number _____

Name on Card _____

Expiration Date ___/___/___ CVV _____ Billing Zip Code _____

Signature _____